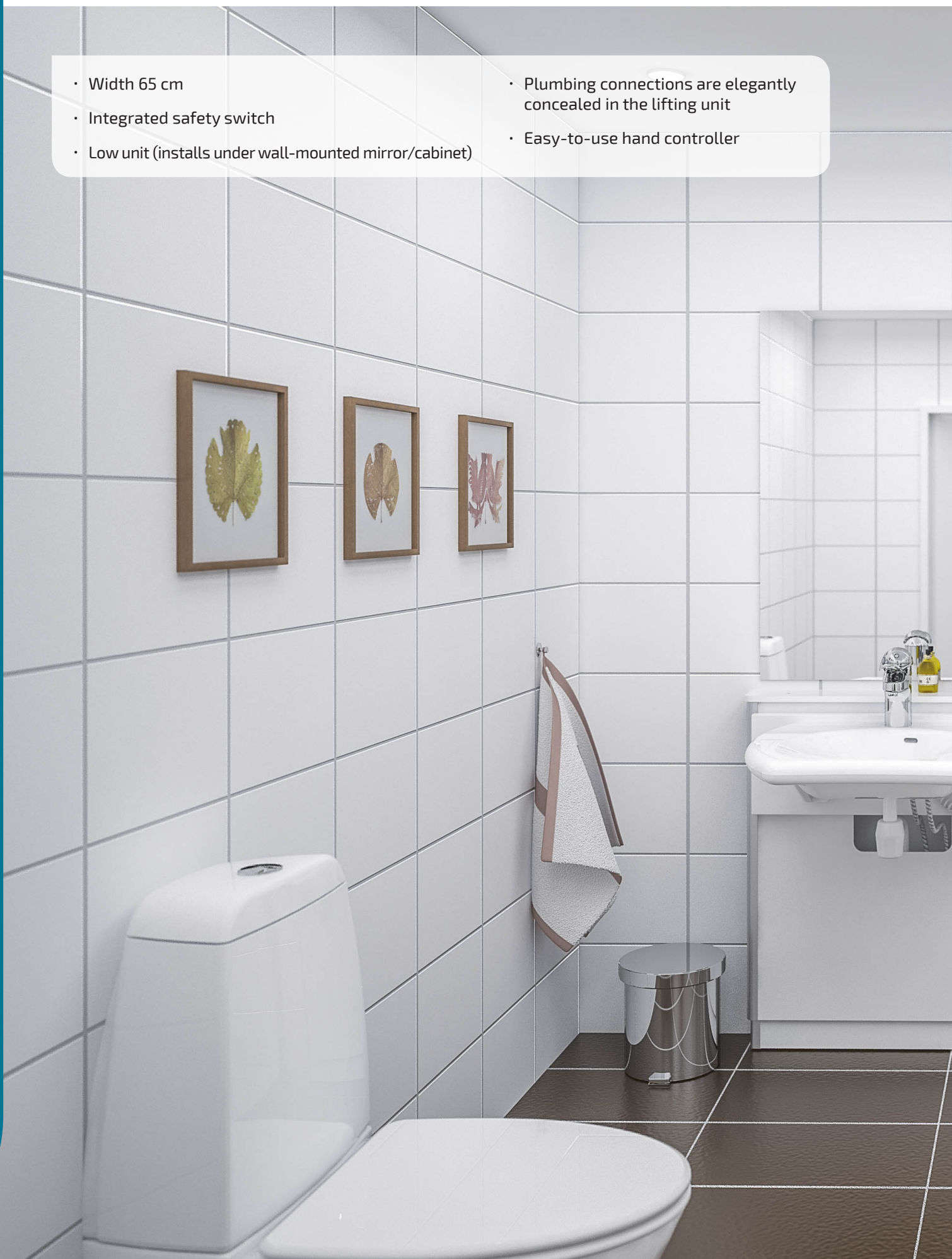


# Basicline 415

Electrically height-adjustable washbasin, low-profile

- Width 65 cm
- Integrated safety switch
- Low unit (installs under wall-mounted mirror/cabinet)
- Plumbing connections are elegantly concealed in the lifting unit
- Easy-to-use hand controller





415-11-05

Page 28



- Overall depth 59.2 cm
- Compact washbasin for children or confined spaces

415-01-05

Page 29



- Overall depth 63.5 cm
- Wheelchair accessible washbasin with shallow bowl and concave front edge

415-03-05

Page 30



- Overall depth 69.5 cm
- Wheelchair accessible washbasin with shallow bowl, concave front edge and easy-to-grip sides

415-10-05

Page 31



- Overall depth 69.5 cm
- Wheelchair accessible washbasin with shallow bowl, generous flat surfaces and easy-to-grip sides

415-15-05

Page 32



- Overall depth 69.5 cm
- Wheelchair accessible washbasin with shallow bowl and integrated gripping slots

**Functions and advantages**

- Legroom under the washbasin, 482 mm
- Distance to mixer lever, 225 mm
- Compact washbasin for children or confined spaces

**Standard equipment**

- Washbasin (425-011)
- Mixer (425-105)
- Flexible drain hose with drainage trap
- Flexible water hoses
- Hand controller with coiled cable
- Safety breaker

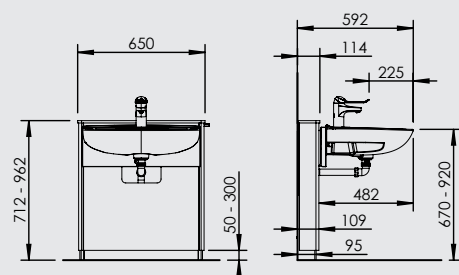
**Specifications**

<b>Lift model</b>	Electric, steplessly adjustable washbasin unit, low-profile
<b>Legroom</b>	482 mm
<b>Mixer</b>	150 mm lever. Distance to mixer lever, 225 mm
<b>Overall depth from wall</b>	592 mm
<b>Washbasin</b>	Porcelain washbasin 600x445 mm, incl. overflow and bottom drain with plug
<b>Max load, washbasin</b>	50 kg
<b>Operation</b>	Cable controller with hook, IP65
<b>Width</b>	650 mm
<b>Installation</b>	Wall mounted
<b>Height adjustment</b>	250 mm
<b>Speed</b>	18 mm/sec.
<b>Lifting force</b>	100 kg
<b>Electrical connection</b>	Plug for 230 V, max 1.5A
<b>Enclosure class</b>	IPX4
<b>Safety</b>	The safety switch will stop the basin from lowering if it comes into contact with the user's legs.
<b>Material-specification</b>	<b>Back panel:</b> 4 mm compact laminate with sides of anodised aluminium <b>Top shelf:</b> 12 mm compact laminate <b>Safety switch:</b> Powder-coated sheet steel <b>Installation cover</b> 4 mm compact laminate
<b>Plumbing connections</b>	Flexible water hoses and drain hose with water trap
	CE



Art. no.	Designation
415-11-05	BASICLINE 415-11-05 - incl. single lever mixer with 150 mm lever

(mm)



**Functions and advantages**

- Legroom under the washbasin, 526 mm
- Distance to mixer lever, 265 mm
- Wheelchair accessible washbasin with shallow bowl and concave front edge

**Standard equipment**

- Washbasin (425-001)
- Mixer (425-105)
- Flexible drain hose with drainage trap
- Flexible water hoses
- Hand controller with coiled cable
- Safety breaker

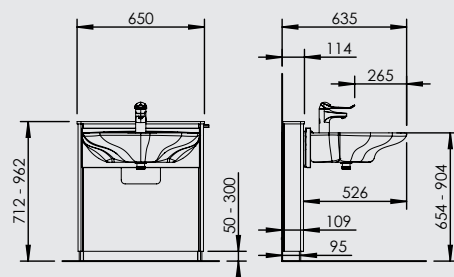
**Specifications**

<b>Lift model</b>	Electric, steplessly adjustable washbasin unit, low-profile
<b>Legroom</b>	526 mm
<b>Mixer</b>	150 mm lever. Distance to mixer lever, 265 mm
<b>Overall depth from wall</b>	635 mm
<b>Washbasin</b>	Porcelain washbasin 600x490 mm, incl. overflow and bottom drain with plug
<b>Max load, washbasin</b>	50 kg
<b>Operation</b>	Cable controller with hook, IP65
<b>Width</b>	650 mm
<b>Installation</b>	Wall mounted
<b>Height adjustment</b>	250 mm
<b>Speed</b>	18 mm/sec.
<b>Lifting force</b>	100 kg
<b>Electrical connection</b>	Plug for 230 V, max 1.5A
<b>Enclosure class</b>	IPX4
<b>Safety</b>	The safety switch will stop the basin from lowering if it comes into contact with the user's legs.
<b>Material-specification</b>	<b>Back panel:</b> 4 mm compact laminate with sides of anodised aluminium <b>Top shelf:</b> 12 mm compact laminate <b>Safety switch:</b> Powder-coated sheet steel <b>Installation cover:</b> 4 mm compact laminate
<b>Plumbing connections</b>	Flexible water hoses and drain hose with water trap
	CE



Art. no.	Designation
415-01-05	BASICLINE 415-01-05 - incl. single lever mixer with 150 mm lever

(mm)



**Functions and advantages**

- Legroom under the washbasin, 586 mm
- Distance to mixer lever, 324 mm
- Wheelchair accessible washbasin with shallow bowl, concave front edge and easy-to-grip sides

**Standard equipment**

- Washbasin (425-003)
- Mixer (425-105)
- Flexible drain hose with drainage trap
- Flexible water hoses
- Hand controller with coiled cable
- Safety breaker

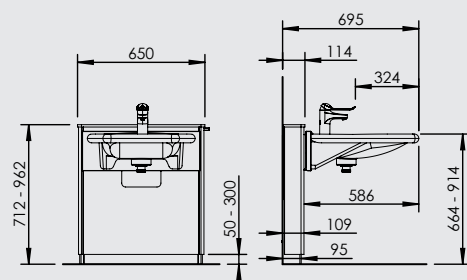
**Specifications**

<b>Lift model</b>	Electric, steplessly adjustable washbasin unit, low-profile
<b>Legroom</b>	586 mm
<b>Mixer</b>	150 mm lever. Distance to mixer lever, 324 mm
<b>Overall depth from wall</b>	695 mm
<b>Washbasin</b>	Porcelain washbasin 550x550 mm, incl. overflow and bottom drain with plug
<b>Max load, washbasin</b>	50 kg
<b>Operation</b>	Cable controller with hook, IP65
<b>Width</b>	650 mm
<b>Installation</b>	Wall mounted
<b>Height adjustment</b>	250 mm
<b>Speed</b>	18 mm/sec.
<b>Lifting force</b>	100 kg
<b>Electrical connection</b>	Plug for 230 V, max 1.5A
<b>Enclosure class</b>	IPX4
<b>Safety</b>	The safety switch will stop the basin from lowering if it comes into contact with the user's legs.
<b>Material-specification</b>	<b>Back panel:</b> 4 mm compact laminate with sides of anodised aluminium <b>Top shelf:</b> 12 mm compact laminate <b>Safety switch:</b> Powder-coated sheet steel <b>Installation cover:</b> 4 mm compact laminate
<b>Plumbing connections</b>	Flexible water hoses and drain hose with water trap
	CE



Art. no.	Designation
415-03-05	BASICLINE 415-03-05 - incl. single lever mixer with 150 mm lever

(mm)



**Functions and advantages**

- Legroom under the washbasin, 586 mm
- Distance to mixer lever, 330 mm
- Wheelchair accessible washbasin with shallow bowl, generous flat surfaces and easy-to-grip sides

**Standard equipment**

- Washbasin (425-010)
- Mixer (425-105)
- Flexible drain hose with drainage trap
- Flexible water hoses
- Hand controller with coiled cable
- Safety breaker

**Specifications**

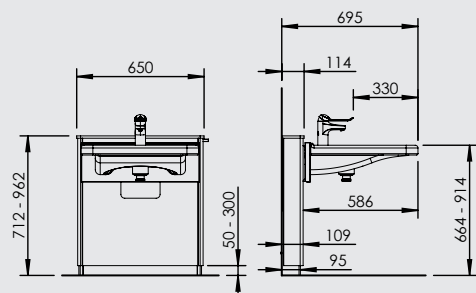
<b>Lift model</b>	Electric, steplessly adjustable washbasin unit, low-profile
<b>Legroom</b>	586 mm
<b>Mixer</b>	150 mm lever. Distance to mixer lever, 330 mm
<b>Overall depth from wall</b>	695 mm
<b>Washbasin</b>	Porcelain washbasin 600x550 mm, incl. overflow and bottom drain with plug
<b>Max load, washbasin</b>	50 kg
<b>Operation</b>	Cable controller with hook, IP65
<b>Width</b>	650 mm
<b>Installation</b>	Wall mounted
<b>Height adjustment</b>	250 mm
<b>Speed</b>	18 mm/sec.
<b>Lifting force</b>	100 kg
<b>Electrical connection</b>	Plug for 230 V, max 1.5A
<b>Enclosure class</b>	IPX4
<b>Safety</b>	The safety switch will stop the basin from lowering if it comes into contact with the user's legs.
<b>Material-specification</b>	<b>Back panel:</b> 4 mm compact laminate with sides of anodised aluminium <b>Top shelf:</b> 12 mm compact laminate <b>Safety switch:</b> Powder-coated sheet steel <b>Installation cover:</b> 4 mm compact laminate
<b>Plumbing connections</b>	Flexible water hoses and drain hose with water trap
	CE



Art. no.	Designation
415-10-05	BASICLINE 415-10-05 - incl. single lever mixer with 150 mm lever



(mm)



**Functions and advantages**

- Legroom under the washbasin, 586 mm
- Distance to mixer lever, 315 mm
- Wheelchair accessible washbasin with shallow bowl and integrated gripping slots

**Standard equipment**

- Washbasin, excl. overflow (425-015)
- Mixer (425-105)
- Flexible drain hose with drainage trap
- Flexible water hoses
- Hand controller with coiled cable
- Safety breaker

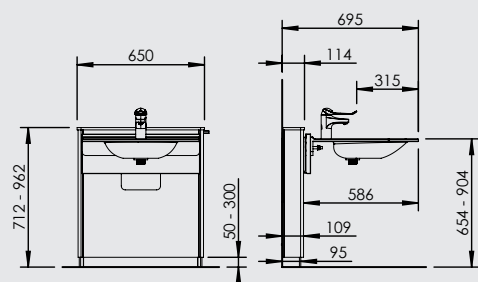
**Specifications**

<b>Lift model</b>	Electric, steplessly adjustable washbasin unit, low-profile
<b>Legroom</b>	586 mm
<b>Mixer</b>	150 mm lever. Distance to mixer lever, 315 mm
<b>Overall depth from wall</b>	695 mm
<b>Washbasin</b>	Wash basin of solid surface material with integrated grab handles 600x550 mm, excl. overflow
<b>Max load, washbasin</b>	50 kg
<b>Operation</b>	Cable controller with hook, IP65
<b>Width</b>	650 mm
<b>Installation</b>	Wall mounted
<b>Height adjustment</b>	250 mm
<b>Speed</b>	18 mm/sec.
<b>Lifting force</b>	100 kg
<b>Electrical connection</b>	Plug for 230 V, max 1.5A
<b>Enclosure class</b>	IPX4
<b>Safety</b>	The safety switch will stop the basin from lowering if it comes into contact with the user's legs.
<b>Material-specification</b>	<b>Back panel:</b> 4 mm compact laminate with sides of anodised aluminium <b>Top shelf:</b> 12 mm compact laminate <b>Safety switch:</b> Powder-coated sheet steel <b>Installation cover</b> 4 mm compact laminate
<b>Plumbing connections</b>	Flexible water hoses and drain hose with water trap
	CE



Art. no.	Designation
415-15-05	BASICLINE 415-15-05 - incl. single lever mixer with 150 mm lever

(mm)



**Functions and advantages**

- Basin lifter for the optional washbasin

**Standard equipment**

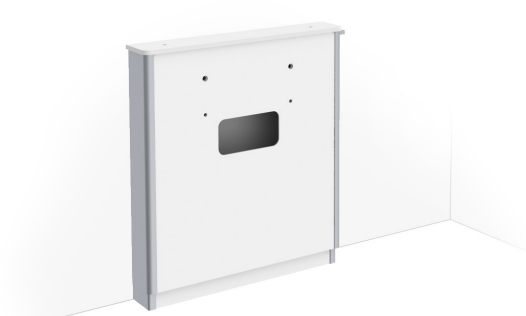
- Hand controller with coiled cable

**Recommended options**

- Washbasin
- Mixer
- Flexible water hoses
- Flexible drain hose with drainage trap
- Safety breaker

**Specifications**

<b>Lift model</b>	Electric, steplessly adjustable washbasin unit, low-profile
<b>Operation</b>	Cable controller with hook, IP65
<b>Width</b>	650 mm
<b>Installation</b>	Wall mounted
<b>Height adjustment</b>	250 mm
<b>Speed</b>	18 mm/sec.
<b>Lifting force</b>	100 kg
<b>Electrical connection</b>	Plug for 230 V, max 1.5A
<b>Enclosure class</b>	IPX4
<b>Safety</b>	Safety switch available as an option
<b>Suitable basins</b>	Max. weight: 40 kg Max width 590 mm Max depth: 600 mm Attachment: Washbasin, bolt installation centre-to-centre 280 mm
<b>Material-specification</b>	<b>Back panel:</b> 4 mm compact laminate with sides of anodised aluminium <b>Top shelf:</b> 12 mm compact laminate <b>Installation cover</b> 4 mm compact laminate
<b>Plumbing connections</b>	Flexible drain hose with drainage trap
	CE



Art. no.	Designation
415-0.	BASICLINE 415-0 - Excl. safety switch , water hoses and drain hose



(mm)

<p><b>Washbasin</b></p> <p>Page 62</p>	<p><b>Mixer</b></p> <p>Page 65</p>	<p><b>Hoses</b></p> <p>Page 68</p>
<p><b>Safety system</b></p> <p>Page 69</p>	<p><b>Control buttons</b></p> <p>Page 69</p>	

